



# SUPPORT35

DESIGN · INSTALL · SUPPORT

"One vendor. One call. Everything technology."

# Our Service Pillars



D

## Design & Consulting

Our Preconstruction Consulting services help clients plan, design, and budget their technology infrastructure from the ground up, ensuring seamless integration and cost-effective execution from concept to completion.



I

## Installation

Our Installation services deliver precise, efficient, and professional implementation of IT, AV, and automation systems—ensuring every project is completed on time, on budget, and built to perform flawlessly.



S

## Support

24/7 help desk, nationwide technician network, proactive maintenance, and emergency repairs with minimal downtime.



T

## Technology Partnerships

Top-tier, enterprise-grade brands delivering scalable, future-proof solutions with proven reliability

# The Support305 Difference

*Integrated solutions across every vertical we touch.*

**Hospitality & Entertainment**

**Health Care & Medical**

**Financial Services**

**Retail & E-Commerce**



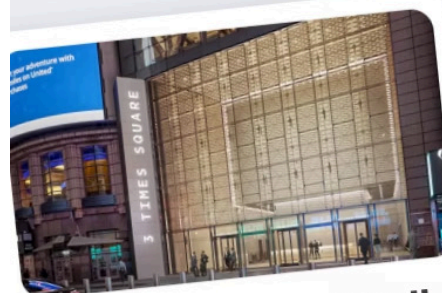
**Zuma**



**Eataly**



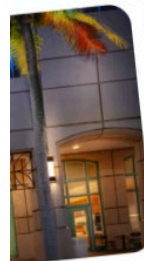
**Toku**



**3 Times Square (Rudin)**



**Durst**



**id**



**Gibson**



**Savage Fenty**

# The Support305 Difference

*Integrated solutions across every vertical we touch.*

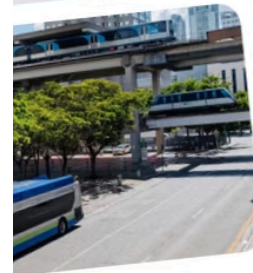
Media Production & Creative Agencies

Manufacturing & Industrial

Education

Government & Public Sector

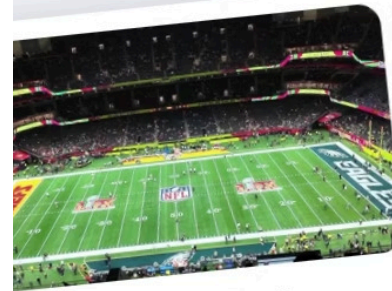
Real Estate & Property Management



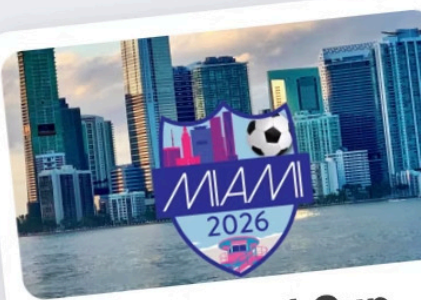
Department of  
Transportation



TSA



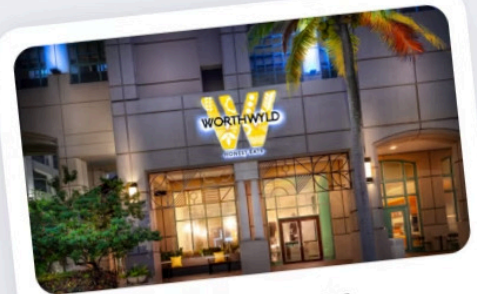
Super Bowl



Fifa World Cup



Harke Law



WorthWyld



# IT/AV/LV Consulting

Coordination with architects, MEP, and design teams

Technology planning integrated into construction documents

Comprehensive low-voltage bid set and scope documentation for competitive bidding

Vendor management, budgeting, and value-engineering alignment

Network, infrastructure, and audio design by in-house sound engineers

Scalable, compliant systems built to perform from day one



# Structured Cabling



Engineered for new construction, existing facilities, and retrofit environments



High-performance data, voice, and fiber cabling built for reliability and speed



Organized rack builds, labeling, and certification for long-term clarity



Seamless integration with IT, AV, and automation systems



Scalable infrastructure designed to evolve with your technology needs



Clean, code-compliant installations that set the foundation for every system



# CCTV /Security



**Design and installation of high-definition surveillance systems**



**Integration with access control, automation, and building management platforms**



**Advanced AI camera solutions with centralized recording and playback**



**Smart analytics including motion detection, facial recognition, and people counting**



**Construction Camera Rentals. Remote viewing, monitoring, and alert management via secure mobile and web platforms**



**Scalable solutions for single-site to enterprise-level deployments**







# Pro Audio Video Solutions



**Design, calibration, and  
installation of professional sound  
systems**



**Acoustic analysis and tuning for  
clarity and coverage**



**Integration of amplifiers, DSPs,  
and networked audio solutions**



**Microphones, mixers, and audio  
distribution for any environment**



**Live performance, hospitality,  
and corporate sound engineering**



**Delivered by our in-house sound  
engineers for precision and  
balance**



# Expert Video Solutions



## Dynamic displays that engage customers

Captivating visual experiences tailored to your audience and environment.



## Large-format video walls for visual impact

Stunning, immersive displays that transform any space into a dynamic canvas.



## Advanced projectors with mapping technology

Precision projection solutions for intricate displays and immersive environments.



## Touchscreen systems for collaboration

Intuitive and interactive solutions to enhance engagement and productivity.



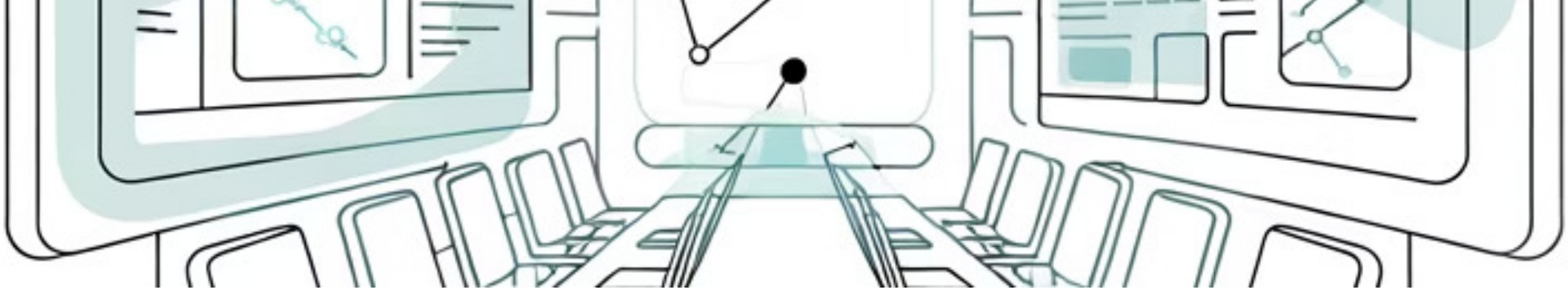
## Seamless multi-location content delivery

Efficient and reliable distribution of your video content across all locations.



## Premium home entertainment setups

Bespoke audio-visual systems for an unparalleled home viewing experience.



## Conference Room & Amenity spaces



Complete design and build-out of high-performance collaboration environments



AI-driven cameras, beamforming microphones, and intelligent audio systems



Interactive touchscreen displays, video walls, projectors, and retractable screens



Seamless integration with conferencing platforms like Zoom, Teams, and Google Meet



Custom-designed amenity spaces, lounges, and multipurpose areas



Engineered for visual impact, clear communication, and effortless control

# Access Control



Design and installation of secure entry and credential-based systems



Integration with CCTV, automation, and building management platforms



Card readers, keypads, mobile access, and biometric solutions



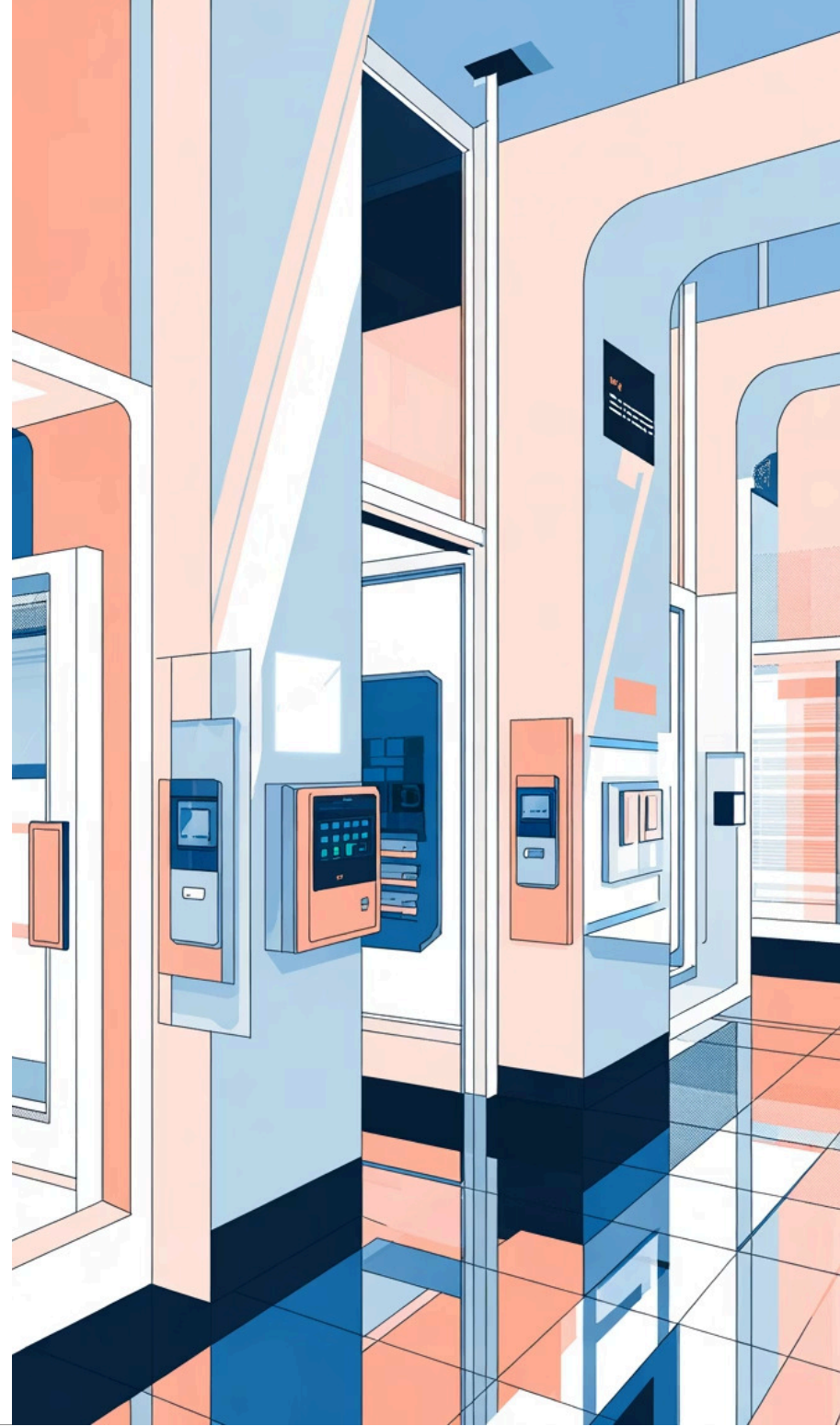
Remote monitoring, reporting, and system management capabilities



Scalable systems for single doors to enterprise-level facilities



UL294-compliant installations ensuring safety and reliability





# Lighting Control



Design, programming, and installation of intelligent lighting systems



Seamless integration with AV, automation, and architectural design



Dimming, color temperature, and scene control for any environment



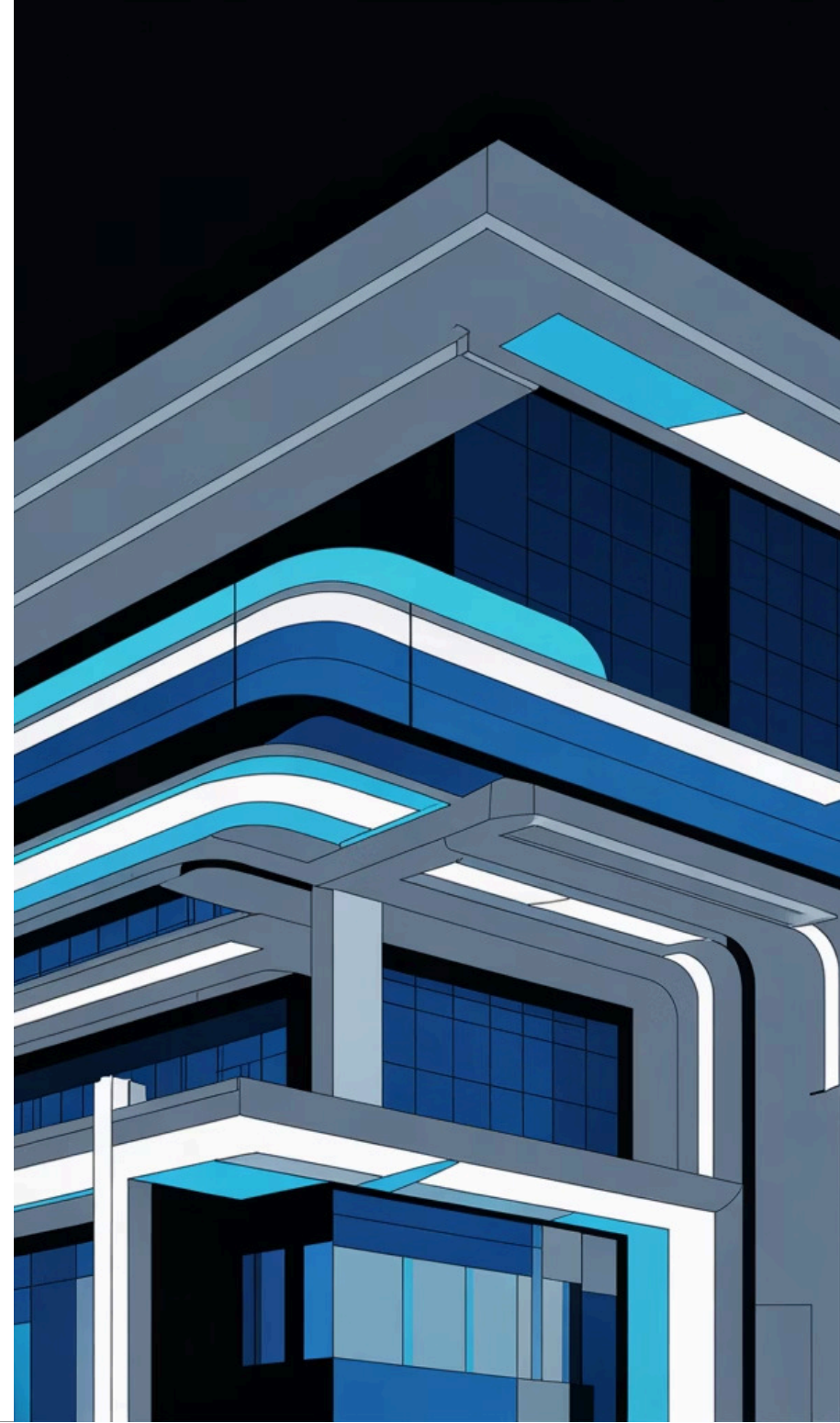
Wired and wireless solutions for new builds and retrofits









Energy-efficient systems tailored for comfort and aesthetics



Engineered for reliability, performance, and effortless control



# Shades

-  Design and installation of low-voltage and motorized shading systems
-  Integration with lighting control, automation, and AV platforms
-  Custom fabric, opacity, and color options for any environment
-  Automated scheduling based on light, time, and occupancy
-  Energy efficiency through daylight harvesting and heat reduction
-  Quiet, precise operation designed for both style and performance



# Network Infrastructure



Design and deployment of wired and wireless network systems



Enterprise-grade routing, switching, and Wi-Fi solutions



Scalable infrastructure for hospitality, commercial, and residential environments



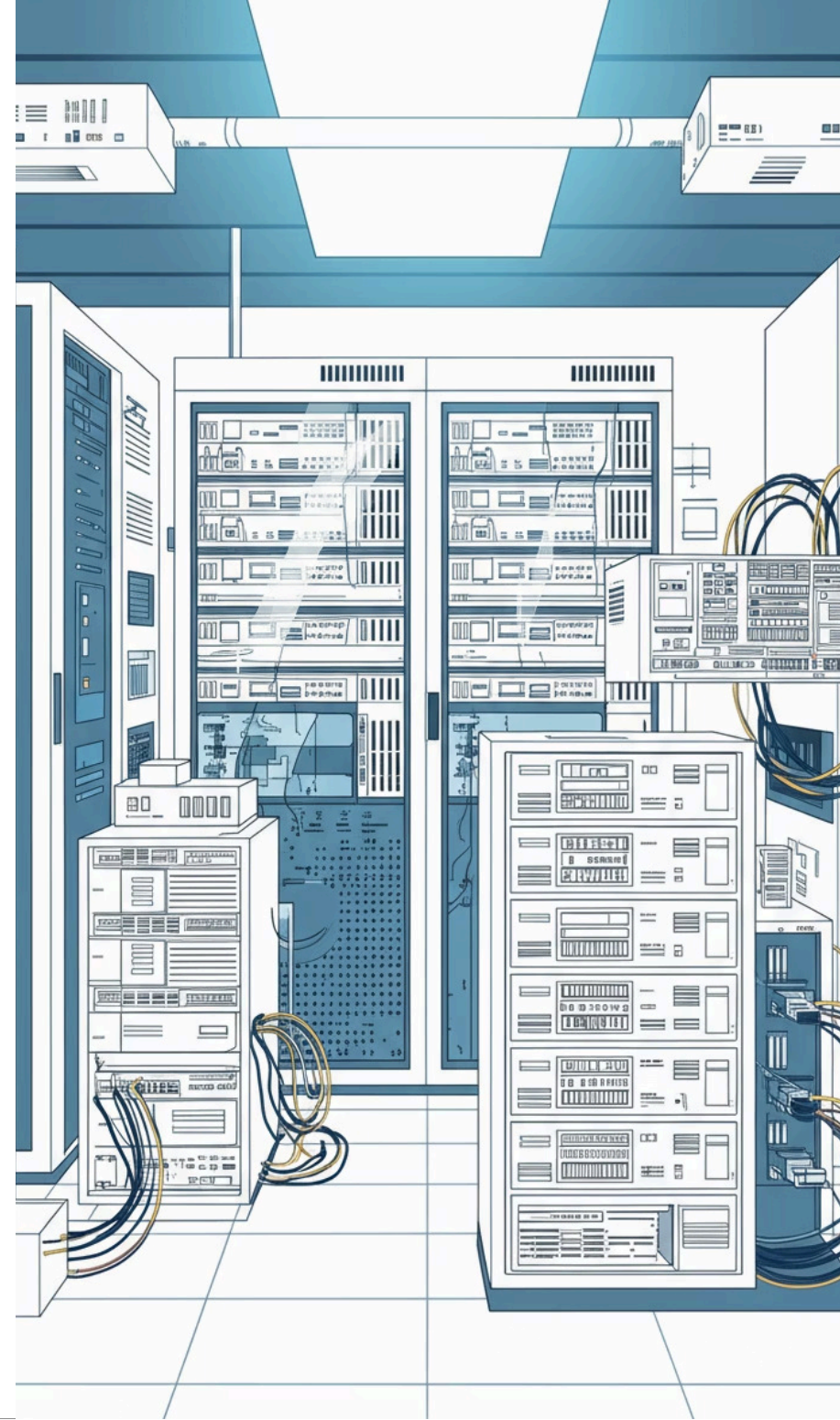
Integration with IT, AV, and building automation systems



Network monitoring, cybersecurity, and performance optimization









Reliable connectivity engineered for speed, stability, and growth





# Managed Services

	Comprehensive IT, AV, and low-voltage system management
	24/7 helpdesk, remote monitoring, and on-site technical support
	Network security, threat detection, and cybersecurity protection
	Preventative maintenance to ensure uptime and system longevity
	Audio-video performance checks and firmware management
	Scalable, cost-effective service plans tailored to your operation



# Cybersecurity Services

Protect your business from evolving threats with our comprehensive security solutions, designed to safeguard your data and infrastructure.



**End-to-end protection for networks, data, and connected systems**



**Threat detection, vulnerability assessments, and penetration testing**



**Firewall, endpoint, and access management configuration**



**Continuous monitoring and incident response readiness**

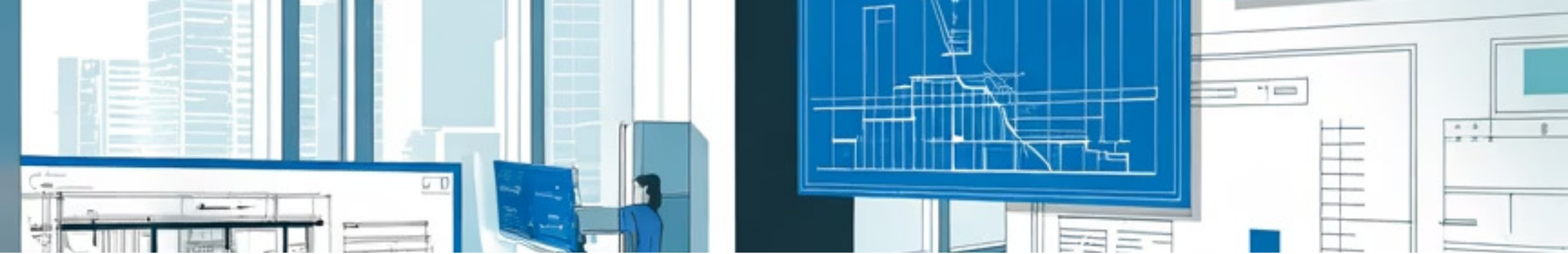


**Compliance support for industry and regulatory standards**



**Proactive defense strategies to keep your business secure and resilient**





## Technology Partners

We collaborate with industry-leading manufacturers and technology providers to deliver reliable, future-ready solutions. Our partnerships ensure every system we deploy meets the highest standards of performance, compatibility, and innovation.

**HIKVISION**

**CRESTRON**

**AVIGILON**



SONANCE  
*James*  
SOUNDSCAPE

Control4

**LUTRON**

**SONY**

THEORY



**SAVANT**

Microsoft

kaleidescape

logitech

**AXIS**  
COMMUNICATIONS

**SHURE**  
LEGENDARY  
PERFORMANCE™

fulcrum  
ACOUSTIC

episode





**SUPPORT305**  
DESIGN · INSTALL · SUPPORT

[\*\*\(305\) 222-7711\*\*](tel:(305)222-7711)

[\*\*www.support305.com\*\*](http://www.support305.com)

[\*\*info@support305.com\*\*](mailto:info@support305.com)